

All Patch series 通通貼系列

An energy patch with a better user experience

擁有更好體驗的能量貼片

ALL Patch intro 通通貼 介紹

Applicable Demographic



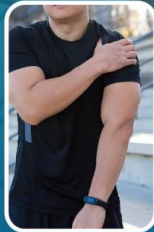
Drivers



Phubbers



Elders



Fitness



Manual Laborers



Prolonged Sitting

How Do You Use All Patches?

- Before use, please clean the area of all patch briefly.
- Apply it to your sore area.
- After feeling the warmth, remove the patch.

Energreen Health Industry Chain Co. Ltd.

All Patch

Change The Usage Habit Of The Traditional Patches In The World.

Universal

Made with food-grade silicone



Instruction



Testimony



Testing Reports



Q&A

Innovative Black Technology

Reusable / Instead Of The Traditional Patches



Energreen Website



Energreen Health Industry Chain Co. Ltd.

2f., No. 121, Shuangfeng Rd., Xinzhuang Dist., New Taipei City 242, Taiwan (R.o.c.)

02-77562264

www.energreen.com.tw

有限公司

ff.com.tw



ALL Patch intro 通通貼 介紹

Growth Ray

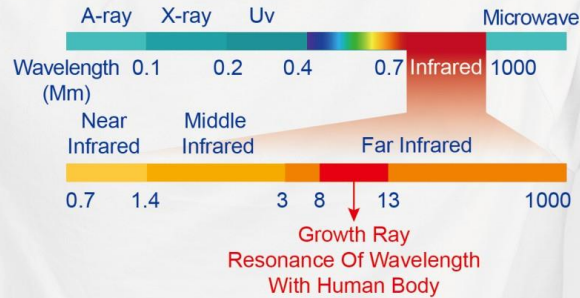
3 Terabits Per Second

Far Infrared Mineral Powder + Graphene Generates 8-13μM Growth Ray With An Efficiency Of Up To 95.3%. Enjoy All The Benefits Of Fertility Light Without The Drawbacks Of Sun Radiation Or Tanning.

$$C = \lambda \times f$$

The Speed Of Light M/s Wavelength M Hz/s

Far-infrared Region In The Spectrum



Universal

Exclusive Edible-grade Plant Extract Formula

The Ingredients Include Tian Shan Snow Lotus, Cinnamon Twig, Chinese Skullcap, Hawthorn, Szechuan Lovage Rhizome, Safflower, Gastrodia Rhizome, Hibiscus, Water Lily, And Ginger.



Patented Technology

Complete Solution

Utilizing Graphene To Significantly Enhance The Emissivity Of Far-infrared Radiation, And Combining The Material With Silicone Gel To Minimize Energy Loss While Allowing For Reusability.

Value	Less Cost	Ingredients	Design	Efficiency
Reusable	200 Pieces At 1/4 The Price Of Traditional Patches.	Far Infrared Mineral Powder And Graphene Infused With A Variety Of Plant Extracts.	Breathable Pore Design With Recyclable Silicone Gel.	Warm Sensation In 5-10 Minutes.

Changes Observed After

Applying All Patch For 10 Minutes.

New New All Patch Never Used
After Clean After 200 Uses And Cleaning

Blood Flow Rate



Blood Flow Velocity



Skin Temperature



Common Issues With Traditional Patches



Side Effects

Western medicine ingredients, lack of breathability causing discomfort and heat retention, and the potential for skin damage during removal.



Not Environmentally Friendly

Taiwan consumes 400 million pieces per year and lacks recycling and reusability options.



High Cost

Each patch costs between 10 to 100 New Taiwan Dollars.

Features Of All Patch

Fast-acting and noticeable, excellent breathability for easy removal, reusable and easy to clean, and offers excellent cost-effectiveness.



Paperback Edition

Original Price NT1,580

有限公司

uff.com.tw



ALL Patch intro 通通貼 介紹

Applicable Demographic

Specially developed for women's needs, suitable for all women.



How Do You Use All Patches?

- Please clean the area where you feel sore first.
- Apply below the belly button and on the sacrum.
- After feeling the warmth, remove the patch.

Energreen Health Industry Chain Co. Ltd.

All Patch

The Most Considerate Best Friend For Women.

For Ladies

Made with food-grade silicone



Instruction



Testimony



Testing Reports



Q&A

Innovative Black Technology

Stylish & Efficiency
Skin-Friendly & Cozy
Reusable & Environmentally



Energreen Website



Energreen Health Industry Chain Co. Ltd.

2f., No. 121, Shuangfeng Rd., Xinzhuang Dist.,
New Taipei City 242, Taiwan (R.o.c.)

02-77562264

www.energreen.com.tw

有限公司
ff.com.tw



ALL Patch intro 通通貼 介紹

Growth Ray

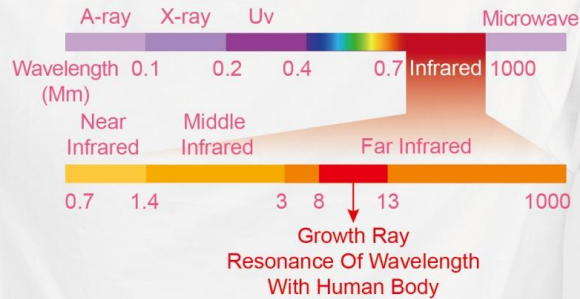
3 Terabits Per Second

Far Infrared Mineral Powder + Graphene Generates 8-13µM Growth Ray With An Efficiency Of Up To 95.3%. Enjoy All The Benefits Of Fertility Light Without The Drawbacks Of Sun Radiation Or Tanning.

$$C = \lambda \times f$$

The Speed Of Light M/s Wavelength M Hz/s

Far-infrared Region In The Spectrum



For Ladies

Exclusive Edible-grade Plant Extract Formula

Tangerine peel, rose, Eucommia bark, cinnamon twig, old ginger.



Keeping your uterus warm products comparison

	Growth Ray	Plants Extracts	Heat	Graphene	Breathable	Need Charing	Reusable
All Patch	As per the evaluation conducted by third-party organizations, the products have been tested and found to be effective and free from harmful radiation.	✓	The heat sensation by far-infrared rays and plant extracts. It's gentle without causing skin burning.	✓	✓	No Need Charing	✓
Other Brand Warmth Belt	Having Growth Ray, but without providing third-party testing and evaluation reports.	Nope	Need charging, or producing external heat. It requires being plugged in and carried with a portable power bank for operation.	✓	Nope	✓	✓
Other Brand Herb Patch	Nope	✓	Weak and herbal ingredients are absorbed by the body without producing heat.	Nope	Nope	Nope	Nope
Other Brand Hand Warmer	Nope	Nope	Producing through metal oxidation or crystallization, it poses a risk of burns if applied directly to the skin.	Nope	Nope	Nope	Nope

Features Of All Patch

Fast-acting and noticeable, excellent breathability for easy removal, reusable and easy to clean, and offers excellent cost-effectiveness.

- Far Infrared
- Graphene
- Natural Plant Extracts
- Promotes Metabolism
- Environmentally Friendly
- Skin-friendly And Breathable
- Invention Patent
- Complete Testing Report



Paperback Edition

Original Price NT1,580



有限公司

uff.com.tw

